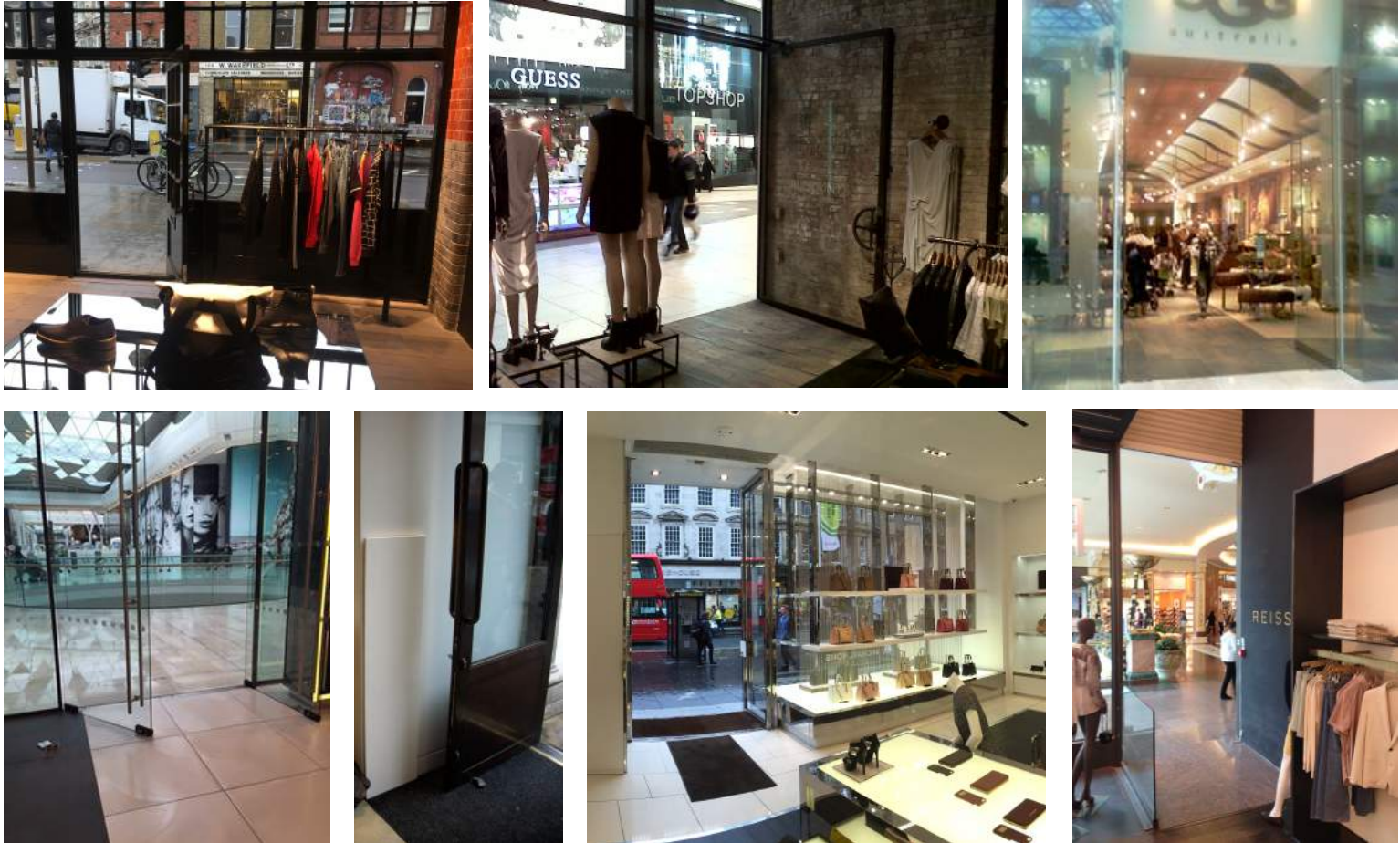


AM INVISIBLE LOOP

AM DETECTION SYSTEMS



The AM Invisible Loop is the industry's most reliable concealed system available. This variable loop system cleverly calculates the perimeter of the opening or doorway and calibrates the electronic settings for optimum detection. The invisible loop tagging system is designed to protect wide doorways and entrances up to 4 meters wide. This versatile system can be concealed in the ceiling, underfloor or within a door frame.

Features:

- Covers entrances/ doorways up to 4 meters wide.
- When installed underfloor, the system can cover wider entrances.
- No pedestals needed
- Unobtrusive installation does not detract from store design
- Compatible with all 58KHz tags and labels
- Popular choice for store architects and designers.

INTREPIDSECURITY

Intrepid Security supplies and maintains a unique portfolio of systems to prevent stock loss and protect profits, supporting a healthy, profitable, business. With over 30 years experience in retail, library and distribution companies of all sizes and in all market sectors, we have a unique insight and understand that loss reduction cannot be sold as a one size fits all solution.

Our independence enables us to offer impartial advice, based on your company's specific needs and to work with each business to provide a viable solution that works. We supply companies large and small including many of the high streets' best known stores as well as the world's most famous department store.

We are constantly sourcing, researching and trialling new systems from the industry's most innovative developers and designers, in addition to our own in-house R & D, to ensure that we can offer you the best loss prevention solutions, including:

- **EAS:** tagging from the world's leading manufacturers across all technologies. We also supply tags, labels and alarms for any manufacturer systems.
- **CCTV:** The Highest definition cameras with mobile apps for dial in capabilities enabling you to see your business 24/7, from anywhere in the world.
- **SmartTrack Camera:** 360° Vision with the world's only Automated Twin Camera carriage track CCTV system. Ingeniously concealed, this travelling motorised system utilizes pan, tilt and zoom track cameras that glide undetected along a track. Silent, swift and precise
- **Access Control:** Software integrated, stand alone and unique RFID solutions.

Our focus is and has always been on quality, independent technical advice and customer support.

INTREPID SECURITY

We are constantly sourcing, researching and trialling new systems to ensure that we can offer you the best loss prevention solutions.

